



NEWS & VIEWS

Kindness, Honesty, Confidence, Perseverance, Safety

Headteacher: Miss V Townsend



Headteacher's Comment:

This week we have had the pleasure of welcoming many visitors and prospective parents to KHCPs. I am pleased to share that our children received glowing feedback from many of our visitors. Our guests were truly impressed by the warmth, enthusiasm, and maturity witnessed throughout the school. It is clear to see that our children are not only achieving academically but also growing into confident, compassionate individuals. I couldn't be prouder of the positive impression they have made. It was heart-warming to hear such positive comments, reflecting the hard work and dedication of both our children and staff. Their behaviour, engagement, and kindness made us all incredibly proud.

It is essential that we continue to create a culture where respect, empathy, and personal boundaries are prioritised, and where inappropriate behaviours are identified and addressed early. We encourage you to reinforce the values of respect, consent, and empathy at home. Open communication between school and home is essential in creating an environment where our children feel safe and supported.

We are committed to working with you to ensure that every child feels safe, valued, and respected. We remind the children daily that we want them to be safe and happy while they are learning. Thank you for your continued support in helping create a positive school community. I am excited to see our children continue to grow and shine and I look forward to many more moments like this!

We are pleased to see more children reading each week, it is fantastic to see so many children receiving their Bronze Reading Owls. Congratulations to the children who have been given them in the below picture. We look forward to more children receiving theirs in the coming weeks. Wishing you all an enjoyable weekend.



Diary Dates

Tuesday 3 Dec– SCARF Drop in session after school

Wednesday 4 December - SCARF workshops

Thursday 5 December – Year 5 Science Museum

Trip

Wednesday 18 December – EYFS & KS1 Nativity

Thursday 19 December – Christmas Jumper Day, Christmas lunch and KS2 singalong & PTA Christmas Disco

Friday 20 December – Last day of term

Friday 3 January – INSET DAY

Monday 6 January – First day back to school



DISCOVERY
EDUCATIONAL TRUST

Chief Executive Officer: Mr R Duff

Kelvedon Hatch C.P School is proud to be part of the Discovery Educational Trust





Weekly Attendance

Weekly Attendance

Class	Reception	Year 1	Year 2	Year 3	Year 4	Year 5	Year 6	Whole School
Attendance	95.3%	98.3%	91.8%	93.1%	89%	96.6%	93%	93.8%

1 st	2 nd	3 rd
Year 1	Year 5	Reception



Yearly Attendance

Yearly Attendance – from 3 September

Class	Reception	Year 1	Year 2	Year 3	Year 4	Year 5	Year 6	Whole School
Attendance	97.1%	96.5%	94.5%	92.6%	92.6%	95.3%	93.8%	94.7%

1 st	2 nd	3 rd
Reception	Year 1	Year 5



Stars of the week

Reception	Year 1	Year 2	Year 3	Year 4	Year 5	Year 6
Willow	Amelia	Harvey	Musa	Gabriella	Poppi	Beau



Miss Townsend's Headteachers Award

Congratulations to Jake in Year 1, you have consistently tried your hardest to be the best you can be. You have consistently worked to improve your learning in class. Well done!



Reminders

On Sunday 15th December the Parish Council are hosting a Christmas Event at Kelvedon Hatch village hall. There is a Santa's Grotto.

Please be courteous of our neighbours when parking around the school at drop off and pick up times. Please remember we also have the use of the village hall for parking.



DISCOVERY
EDUCATIONAL TRUST

Chief Executive Officer: Mr R Duff

Kelvedon Hatch C.P School is proud to be part of the Discovery Educational Trust



www.kelvedonhatch.essex.sch.uk



@HatchCps



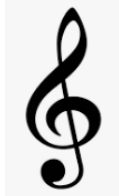
office@kelvedonhatch.essex.sch.uk



Reading at Home

Class	This table shows the number of children and percentages of children that have read this week.						Percentage reading 4 times or more
	Number of times children have read this week						
	0	1	2	3	4	5 or more	
Reception		2 (13%)	1 (7%)	2 (13%)	4 (27%)	6 (40%)	67%
Year 1		1 (4%)	2 (9.5%)	3 (14.2%)	1 (4%)	14 (66%)	70%
Year 2	4 (19%)	3 (13%)		1 (4%)	2 (10%)	12 (54%)	63%
Year 3	3 (11%)	3 (11%)		4 (14%)	3 (11%)	15 (53%)	64%
Year 4	1 (4.8%)	1 (4.8%)		3 (14.3%)	3 (14.3%)	13 (62%)	76.3%
Year 5	8 (28%)		3 (11%)	1 (4%)	9 (32%)	7 (25%)	57%
Year 6					2 (12%)	15 (88%)	100%
Total							

Our school choir has officially started, and the sounds of music are filling the hall! Rehearsals are underway, and it's not too late to join the fun. All junior children are welcome to showcase their talent. Choir practices take place on a Friday lunchtime.



This week we had the joy of watching a fantastic pantomime performance paid for by the PTA. The children thoroughly enjoyed the show and the laughter could be heard echoing around the whole school. The PTA made this possible with their hard work and dedication to raising funds to support the children in the school. The money they raise helps us provide these wonderful opportunities to inspire the children with creative, dramatic experiences.



This week some of you may have seen Gabriella on TV as she was a mascot for Arsenal and because it was so cold she was given a jumper by Katie McCabe! Gabriella said it was really good and she enjoyed the game. Please continue to share your outside achievements with our community.



DISCOVERY
EDUCATIONAL TRUST

Chief Executive Officer: Mr R Duff

Kelvedon Hatch C.P School is proud to be part of the Discovery Educational Trust



www.kelvedonhatch.essex.sch.uk



@HatchCps



office@kelvedonhatch.essex.sch.uk